

THE SASH
WINDOW
WORKSHOP

DOORS - TECHNICAL GUIDE





THE SASH WINDOW WORKSHOP – DOORS

Traditionally made to the highest standards we can manufacture new timber door sets to meet your individual requirements.

Our Classic range draws from 20 years of experience of installing replacement doors into period properties. The range is both classical and elegant combining the very best of traditional period window detail with the best materials and most efficient manufacturing processes.

The timber that we use is:

- Accoya™
- All doors are supplied with hardwood thresholds

Doors can be designed to match the existing door design, and bespoke solutions are available.

Panel Details

A range of standard panel details are available to suit. Please see below.

Paint Finish

STANDARD	OPTIONS AT EXTRA COST
3 - 4 coats white semi-gloss micro porous paint system. Door threshold to be varnished (oak) or painted (hardwood).	Colour match custom finish to suit clients individual needs internally and externally.

Please note that we cannot provide a high gloss finish.

Glazing bar detail

The following glazing bar options are available at no extra charge:

BAR WIDTH	Ovolo Bonded	Ovolo Heritage	Lambs Tongue Bonded	Lambs Tongue Heritage
16mm	✓			
20mm	✓		✓	
24mm	✓	✓	✓	✓



Standard Glazing Specifications - change for doors

	STANDARD DOCUMENT L DOOR	HERITAGE DOUBLE GLAZED DOOR
Internal glass	4mm Planitherm Total + Toughened	4mm Planitherm Total + Toughened
Airspace	12mm	4mm or 6mm or 8mm
Gas	Argon	Krypton / Argon
External glass	6.4 laminated	6.4 laminated
U value	1.8 (max)	1.5 centre pane
Max unit thickness	23mm	18.8mm
Spacer colour	white*	white*
Glazing Tape	white*	Match spacer
External finish	Single pane with bonded bar, intermediate bars as necessary	Individually glazed panes faced with Dry seal

* Black glazing tape available on request

Toughened glass is supplied as required by law and a wide range of other glass types including acoustic laminates are available on request.

Standard Ironmongery

DOOR TYPE	IRONMONGERY**	STANDARD FINISHES
Front Doors	<ul style="list-style-type: none"> • Min. 3 x 100mm stainless steel security hinges per door leaf • 5 lever suited keylike Euro dead lock • High security suited keylike night latch lock • Letter plate draught sealed with back plate • Door centre knob, door knocker, door viewer, numerals, security chain, London bar, Birmingham bar • Banham high security locks • 6 inch carriage bolts 	Brass, satin chrome or brushed chrome
French Doors	<ul style="list-style-type: none"> • Min. 3 x 100mm stainless steel security hinges per door leaf • 5 point Multi-point locking system • Choice of handles, 1 pair per door leaf • 5 lever 2.5" latch Euro lock with a choice of lever latch handles to suit • 6 inch carriage bolts 	Brass, satin chrome or brushed chrome

** A full range of door ironmongery and finishes available at extra cost

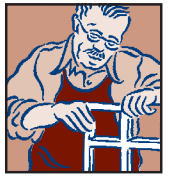
Custom Built Doors

Whilst our Classic door detail has been designed to meet the needs of most of our customers, we appreciate that you may have specialist requirements that need a specialist solution.

If you need to match a door or profile, or need a custom glazing solution, then this presents no problem to us, we can faithfully replicate any detail you require and we will tailor specifications to suit your needs. Over the years we have demonstrated our ability to deliver doors to the most exacting details.

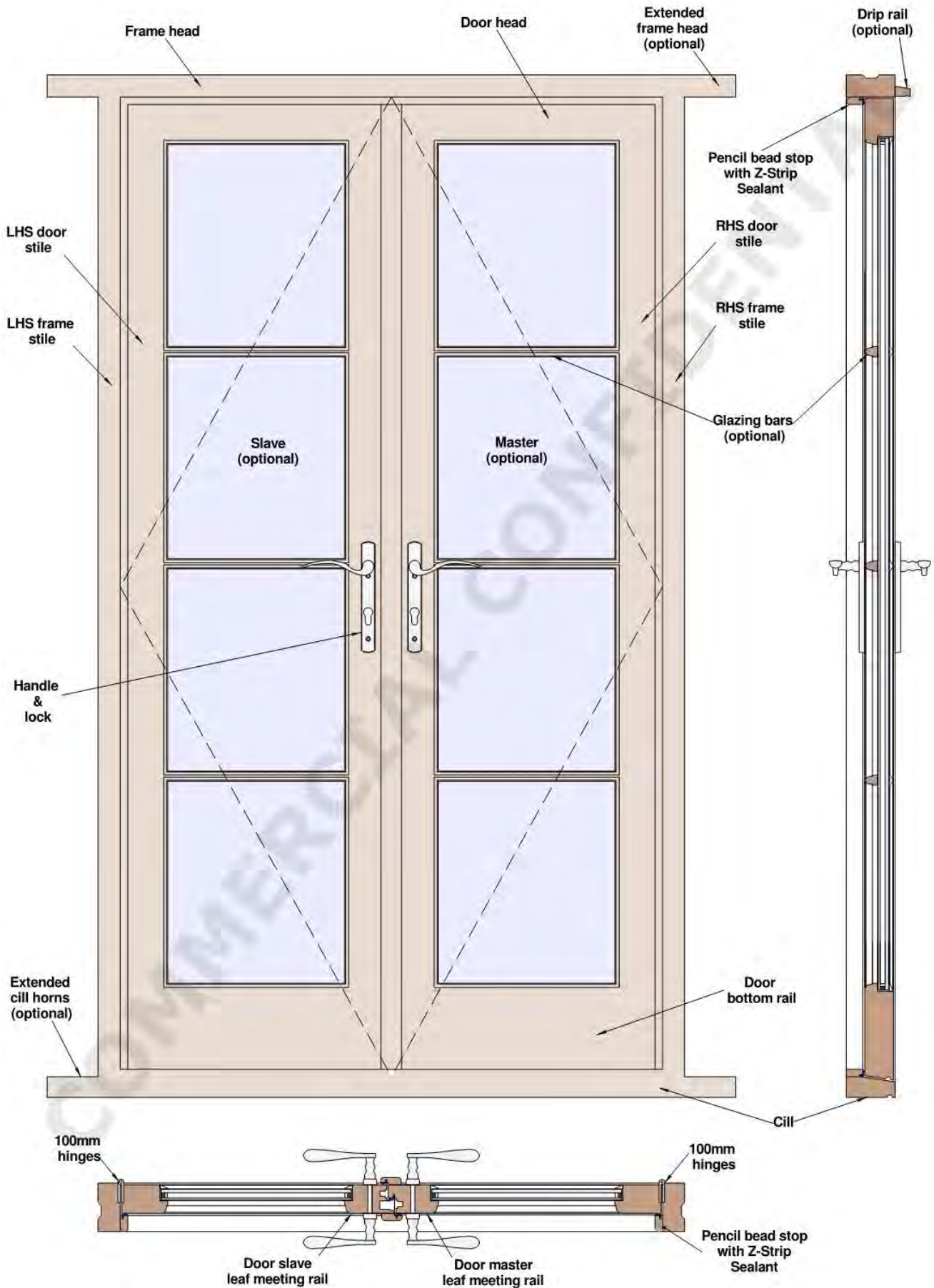
Installation

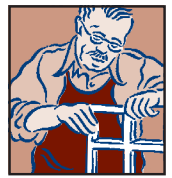
Doors are available supply only or supply and fit by TSWW installation staff.



THE SASH WINDOW WORKSHOP

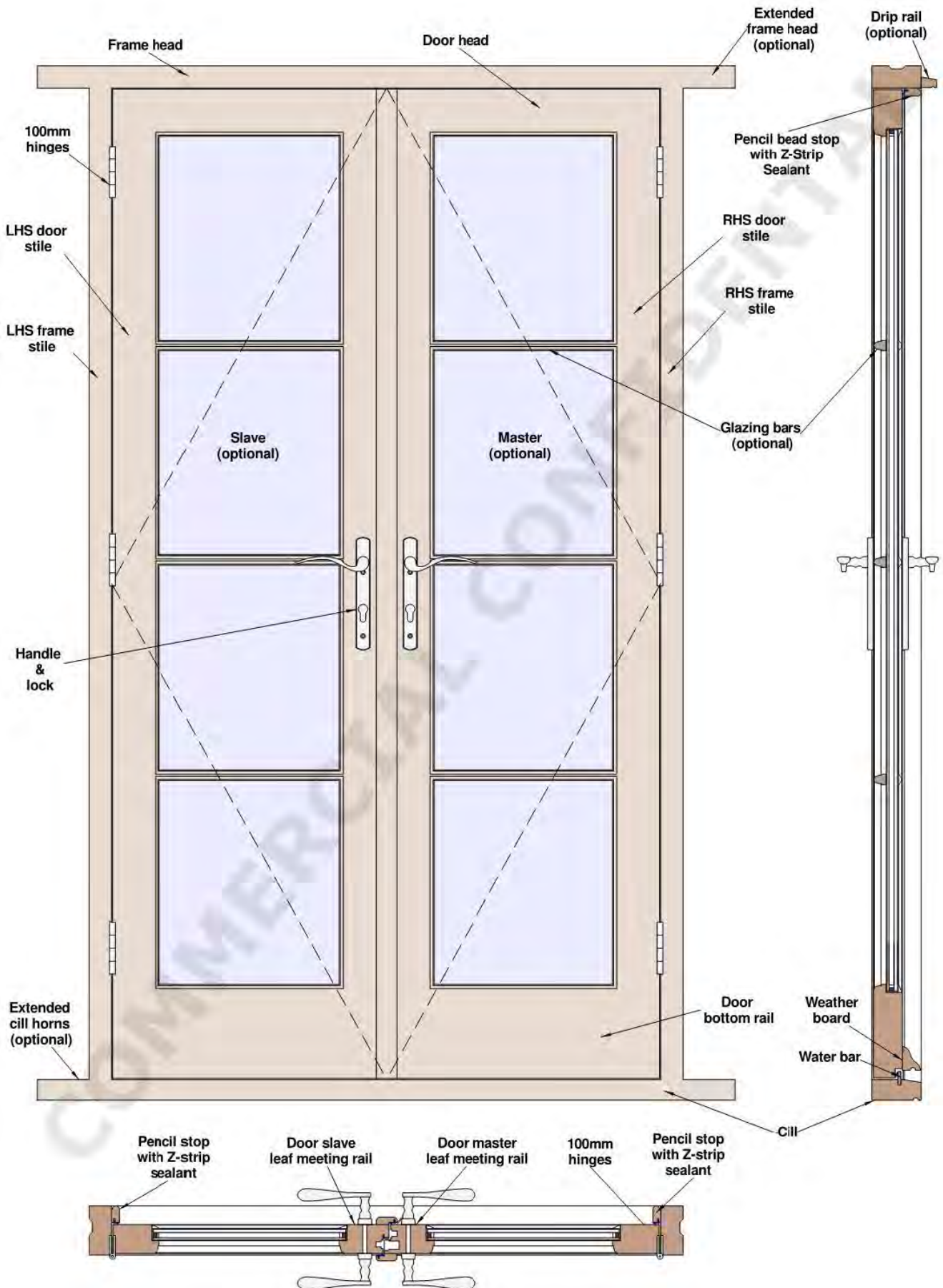
FRENCH DOOR - MULTIPOINT LOCKING SYSTEM - OPEN OUT

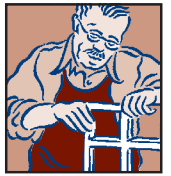




THE SASH WINDOW WORKSHOP

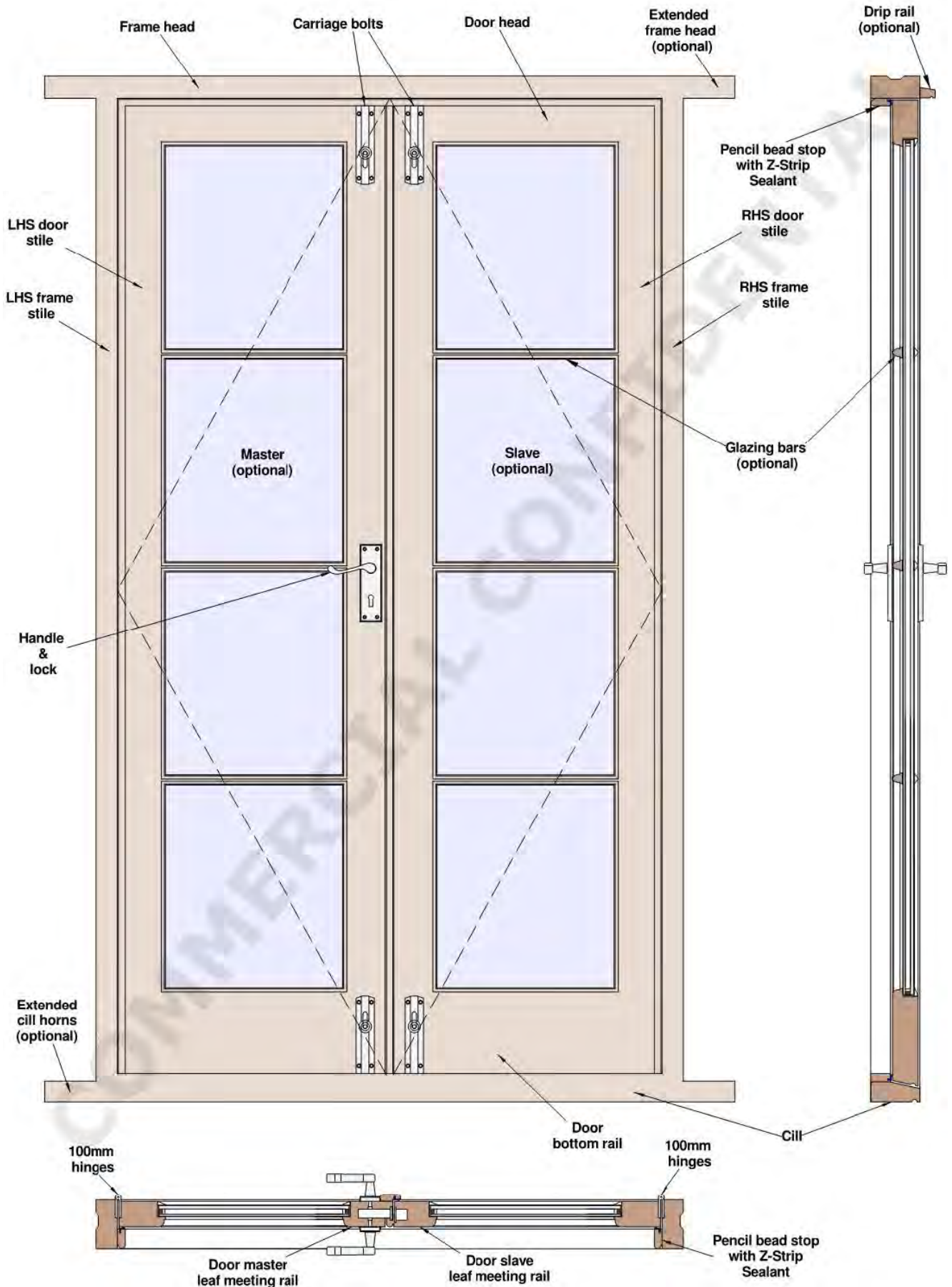
FRENCH DOOR - MULTIPOINT LOCKING SYSTEM - OPEN IN

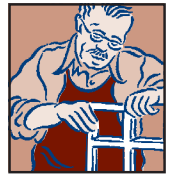




THE SASH WINDOW WORKSHOP

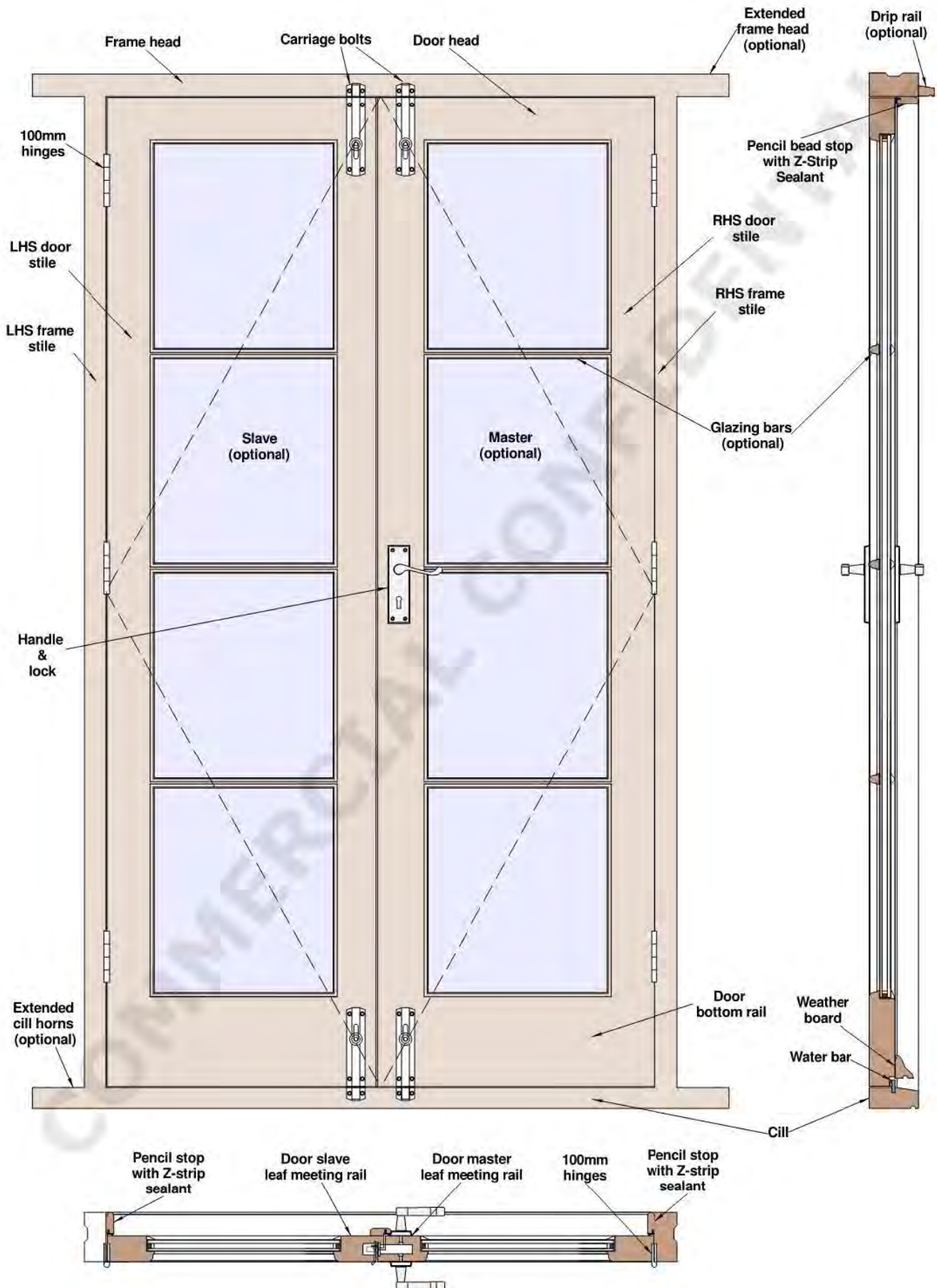
FRENCH DOOR - STANDARD LEVER LOCK - OPEN OUT





THE SASH WINDOW WORKSHOP

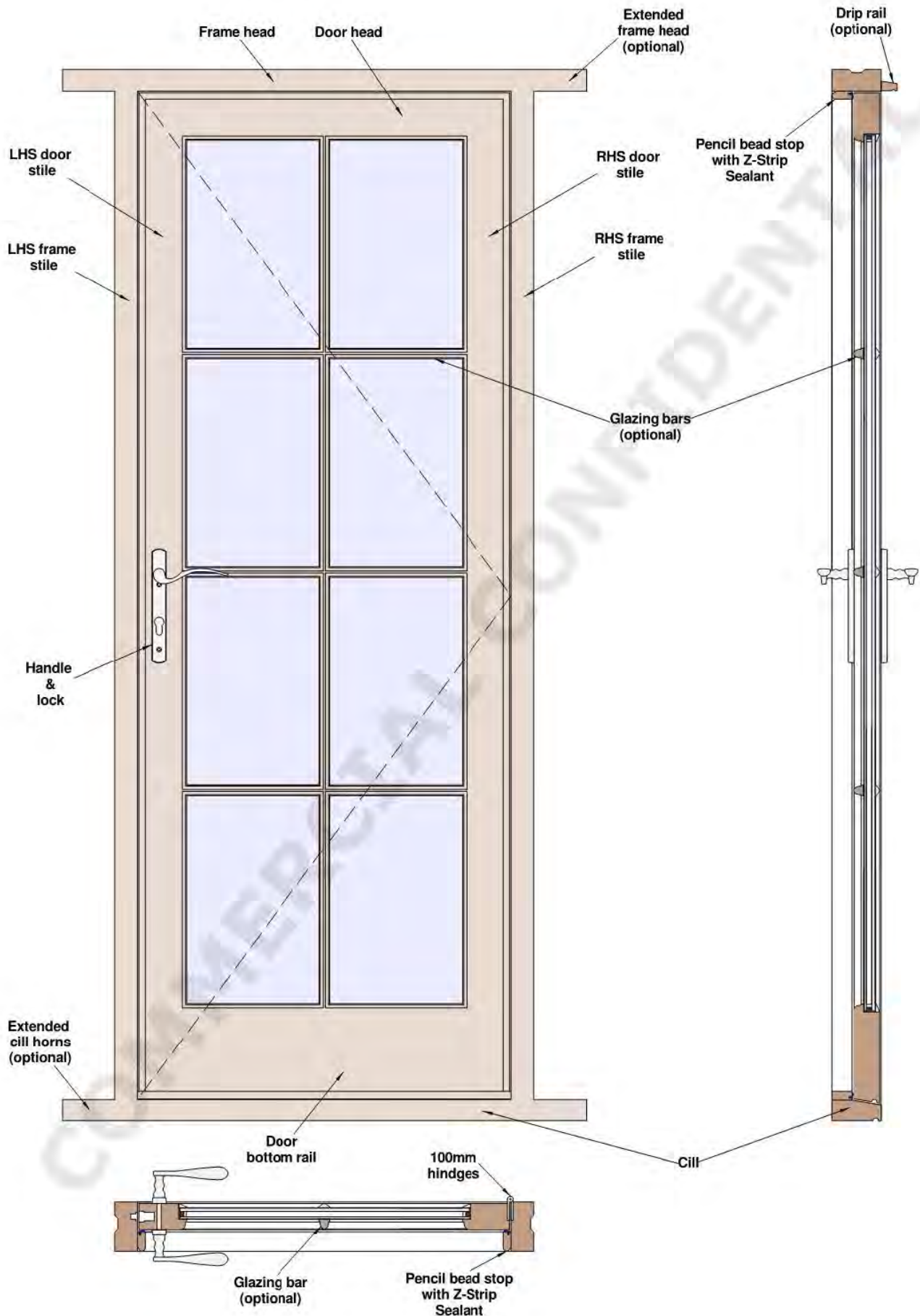
FRENCH DOOR - STANDARD LEVER LOCK - OPEN IN





THE SASH WINDOW WORKSHOP

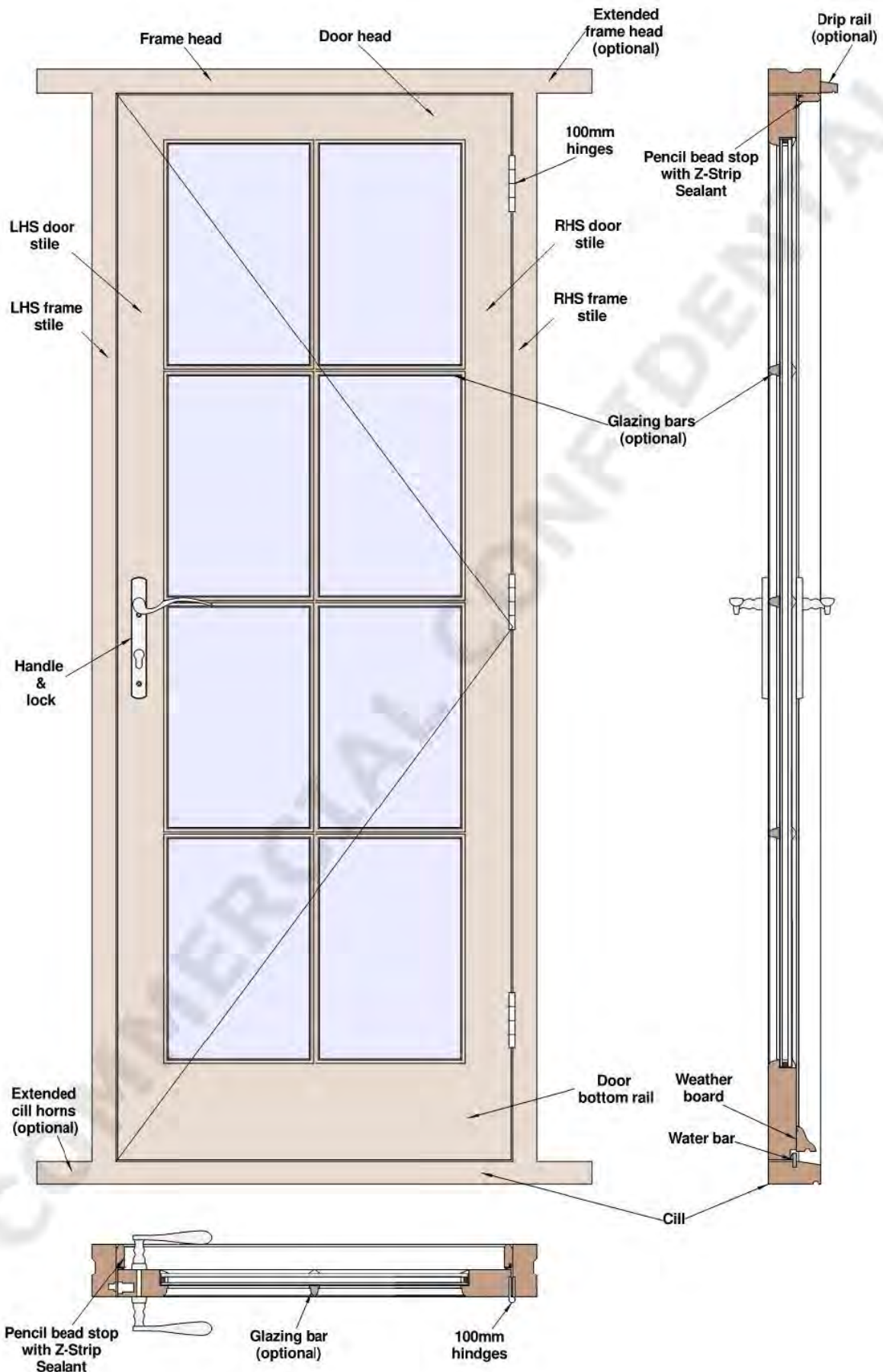
GLAZED DOOR - MULTIPOINT LOCKING SYSTEM - OPEN OUT

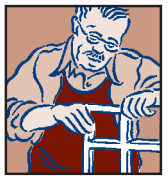




THE SASH
WINDOW
WORKSHOP

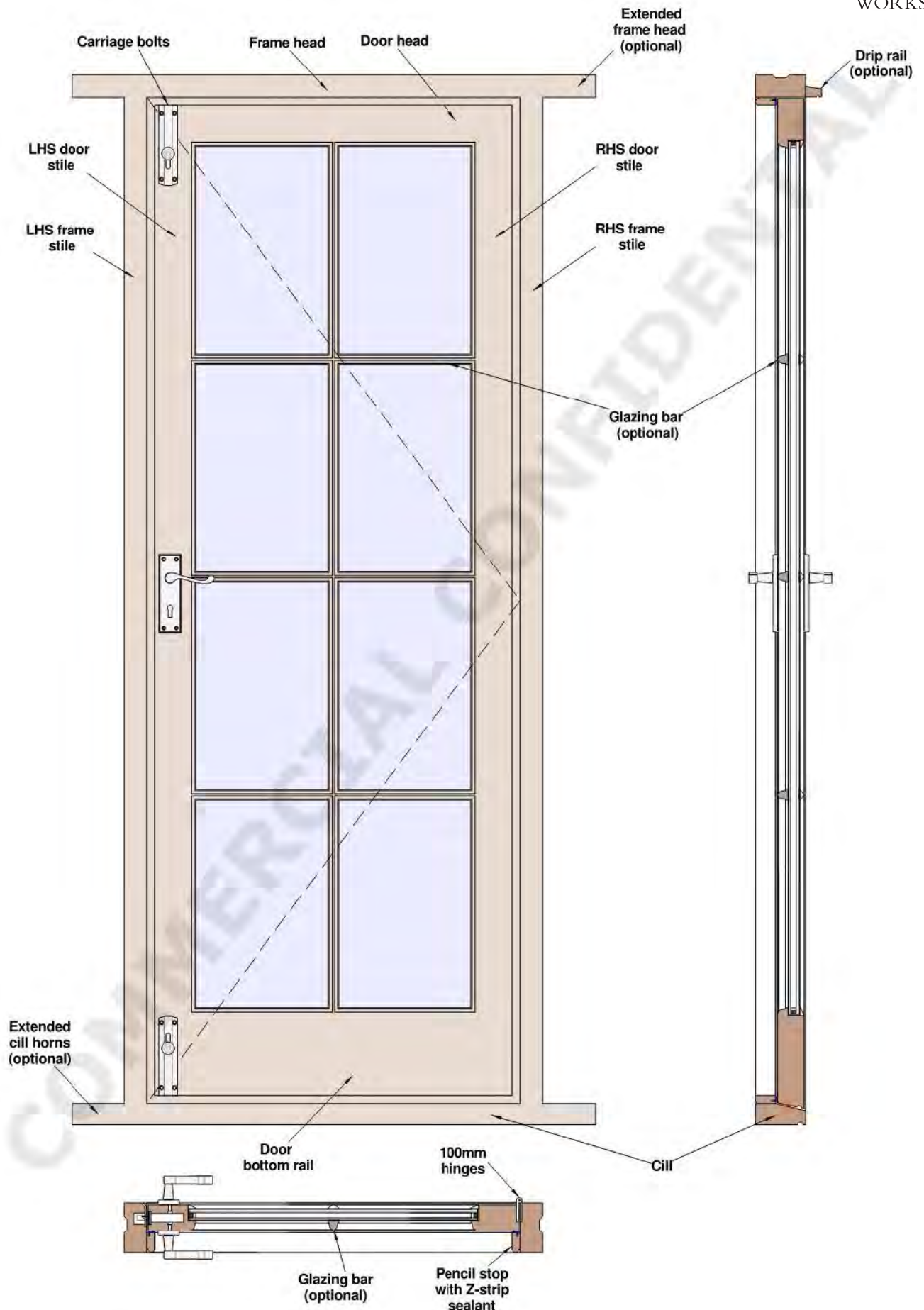
GLAZED DOOR - MULTIPOINT LOCKING SYSTEM - OPEN IN





THE SASH
WINDOW
WORKSHOP

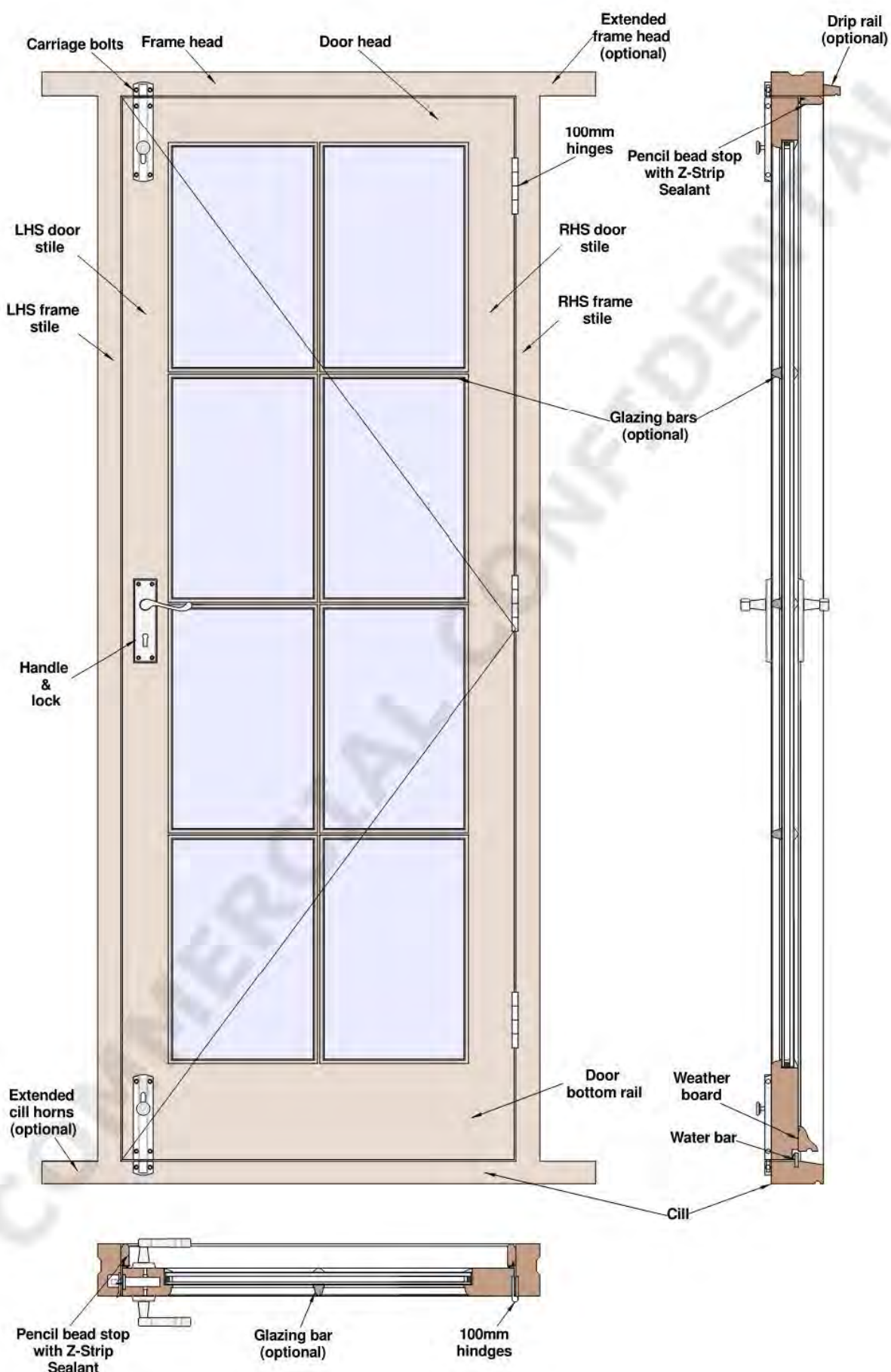
GLAZED DOOR - STANDARD LEVER LOCK - OPEN OUT

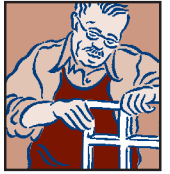




THE SASH
WINDOW
WORKSHOP

GLAZED DOOR - STANDARD LEVER LOCK - OPEN IN



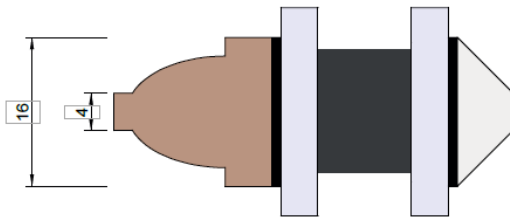


THE SASH
WINDOW
WORKSHOP

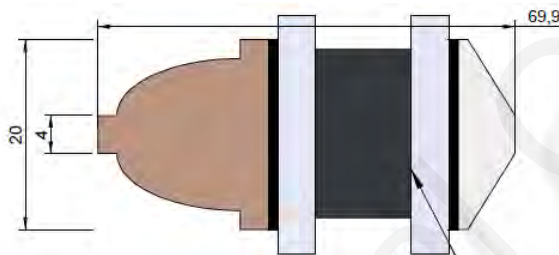
GLAZING BARS

Glazing bar details to sashes - Cross Section

16 Ovolo 4x10 - 4 Low E : 12mm : 4 Low Iron



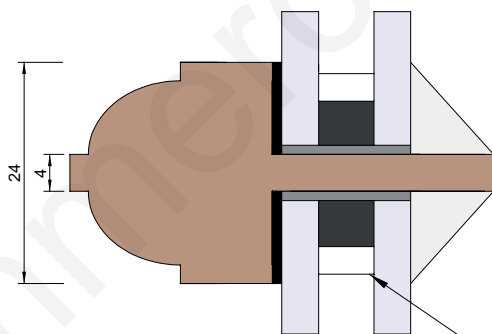
20 Ovolo 6x13 - 4 Low E : 12mm : 4 Low Iron



Other options:
- 24/30mm Ovolo or Lambs Tongue

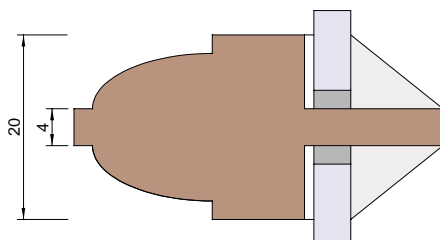
Available colours : Charcoal or White

24 Heritage Ovolo 8x10 - 4 Low E : 6mm : 4 Low Iron

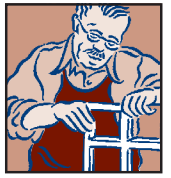


Available colours : Black or White

20 Single glaze Ovolo 6x13 - 4mm Low Iron

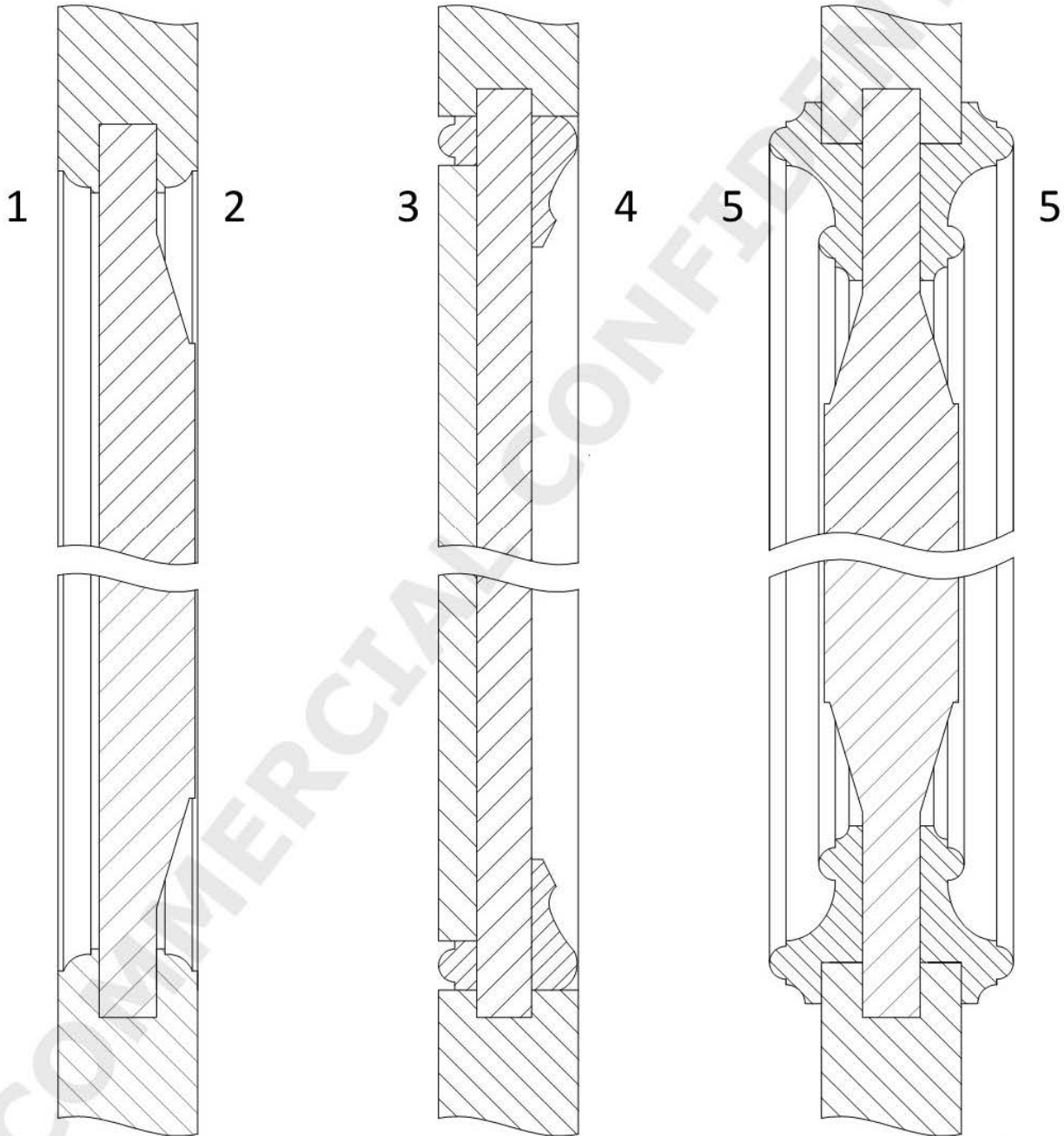


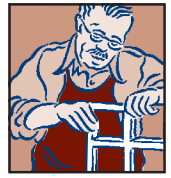
Other options:
- 16/24 mm Ovolo or Lambs Tongue



STANDARD DOOR PANEL SECTIONS

- 1 - Flat / Ovolo
- 2 - Raised & filed / Ovolo
- 3 - Flat / Recessed pencil
- 4 - Flat / Trimmed ogee
- 5 - Raised & filed / Bolection





THE SASH
WINDOW
WORKSHOP

ADDITIONAL DOCUMENTS

The following documents are available from the Commercial section of our website:

www.sashwindow.com/commercial

- TSWW Supply and Install Warranty
- TSWW Supply Only Guarantee
- TSWW Window and Door Maintenance Guidelines
- Insurance backed guarantees and deposit protection

The Sash Window Workshop Trading Ltd.
4 Kiln Lane, Bracknell
Berkshire RG12 1NA

Telephone: 01344 868668
Fax: 01344 868858
email: info@sashwindow.com